



Castles

ASKING PRICE

£1,350,000

Rathcoole Gardens

Crouch End, N8 9PH

H

Castles

PROPERTY SUMMARY

A charming four-bedroom, Victorian home, ideally positioned for Hornsey Station, Stationers Park, Crouch End Broadway and both Rokesly and Weston Park Schools.

Further comprising through-reception, kitchen/diner, study, shower room, bathroom, rear private garden with large shed and external w.c.

An early viewing is highly recommended.

Local Authority: Haringey

Council Tax band: F

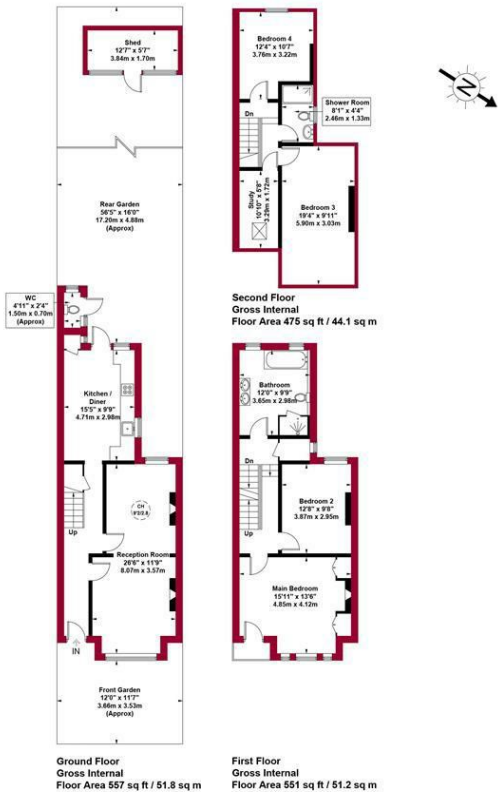




Rathcoole Gardens, N8 Approximate Gross Internal Area = 1666 sq ft / 154.8 sq m

Shed = 70 sq ft / 6.5 sq m

WC = 13 sq ft / 1.2 sq m



For a guide to the area
please scan this code for
more information



House - Terraced

Freehold

Council:

Council Tax Band: F

Lease Remaining: n/a

Service Charge: n/a

Ground Rent: n/a

Agents Note: Whilst every care has been taken to prepare these particulars, they are for guidance purposes only. All measurements are approximate and are for general guidance purposes only and whilst every care has been taken to ensure their accuracy, they should not be relied upon and potential buyers/tenants are advised to recheck the measurements



OFFICE ADDRESS

12 Topsfield Parade
Crouch End
London
N8 8PR

OFFICE DETAILS

020 8348 5515
crouchend@castles.london
<https://www.castles.london>

